



Kimbell Kids From Home

Léger's Moving Shapes

Kimbell Art Museum

Léger's Moving Shapes



The French artist Fernand Léger found inspiration in the geometric shapes he saw in architecture and machine parts. He arranged boldly outlined, colorful shapes to create a modern style at the start of the 20th century.

See... What do you notice? How many colors are used? What shapes do you recognize? How do your eyes move around the composition?

Think... What do these forms make you think about? What sounds might you hear?

Wonder... Which objects do you think Léger studied? What could the letters stand for?

Scroll down for **SUGGESTED ACTIVITIES** inspired by this painting.

Léger's Moving Shapes

Drawing Challenge



Draw an abstract composition based on parts of objects around your home. **Look** for interesting shapes, letters, and colors in unexpected places—like under the kitchen sink!

All you need is regular paper, crayons or oil pastels, and a clipboard or portable hard surface.

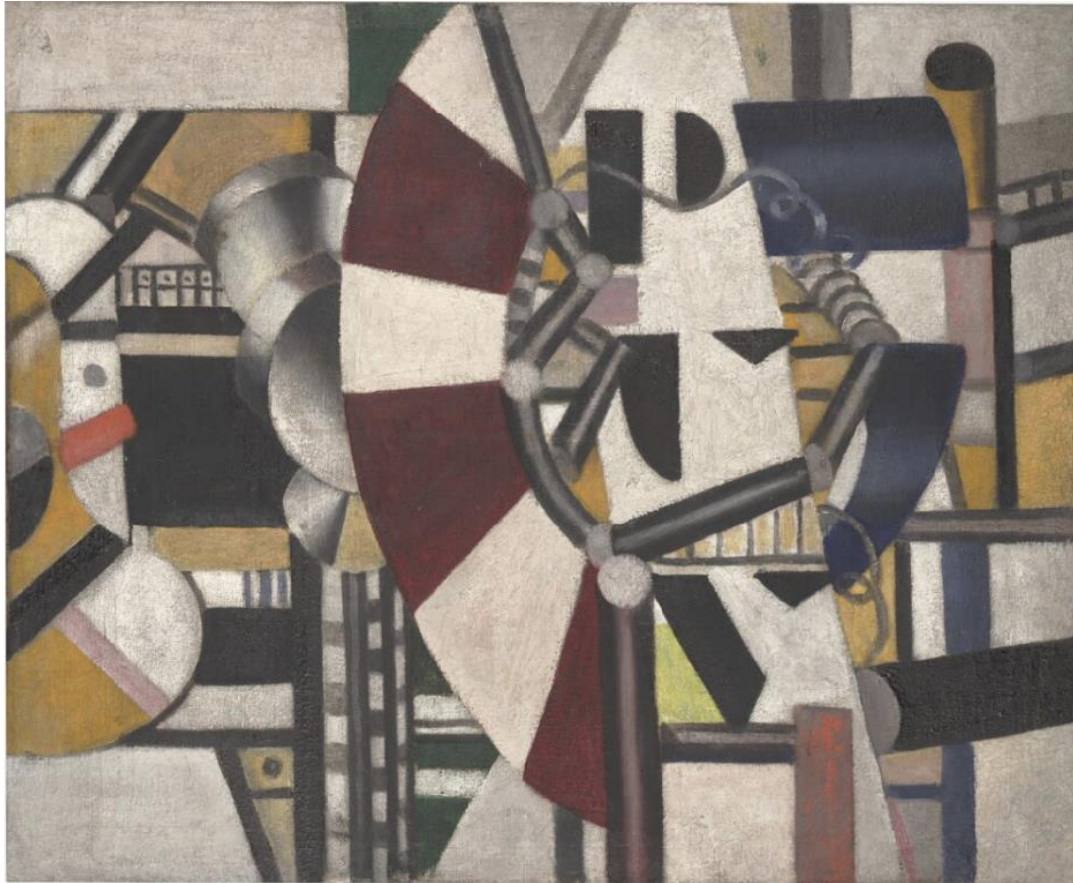
Walk around your house to find interesting shapes. Draw as you go, **using a black crayon** for outlines. **Keep adding** to the drawing as you discover new objects!

Challenge yourself to use only four colors to fill in some of the shapes. Repeat the same colors around the drawing. **Complete the drawing** by adding gray, black, and white areas.

Share your artwork online! #kimbellkids #kimbellfromhome

Léger's Moving Shapes

Look, Write, Compare



Write a poem! Start with lists of nouns, verbs, and adjectives inspired by this painting. Combine those words to craft your poem. (Léger gave this painting to his friend, the poet Blaise Cendrars.)

Discover [another artwork in the Kimbell's collection by Léger.](#) What is similar? What's different?

Alliteration challenge! How many different words start with the letters in the painting? List as many as you can. Which words best match the style?

Arrange different objects from your household to recreate the composition!

Art in order of appearance

Fernand Léger (French, 1881–1955), *Composition*, c. 1920. Kimbell Art Museum

© 2020 Kimbell Art Museum

Kimbell Art Museum